

Did You Know? California Department of Weights and Measures are making site visits at local wineries in Napa and Sonoma counties.

We have recently been informed that inspectors from the California Department of Weights and Measures are making site visits at local wineries in Napa and Sonoma counties. They are checking for compliance to the California State Law requirement of customer facing displays for point of sale systems that rely on software to charge the correct amount for a transaction. We have researched options for you have the following recommendations.

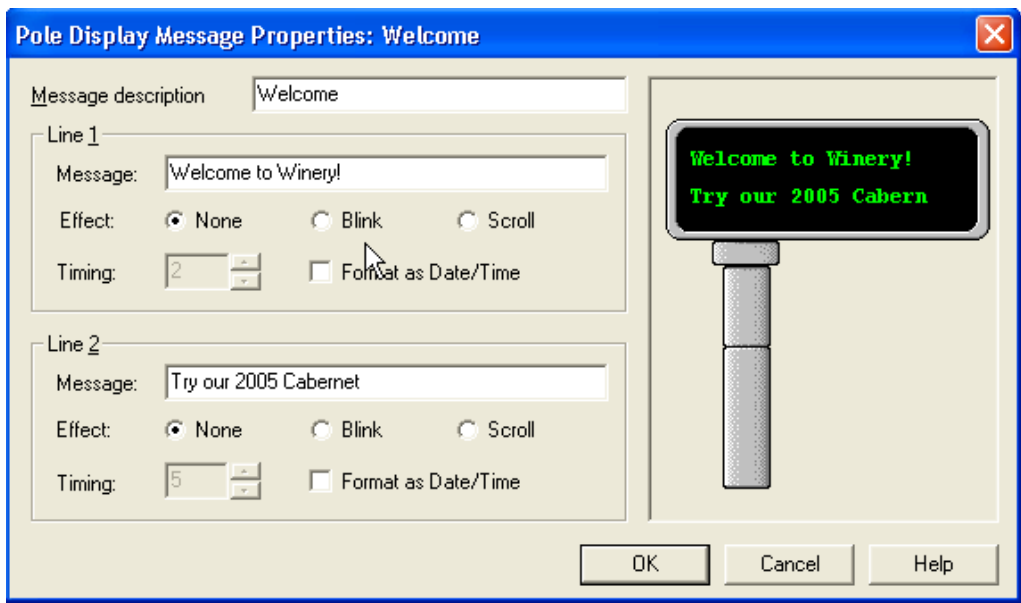
- Table top displays sit on the counter and available in beige or dark grey
- Pole displays that can be mounted to the counter top and are available in beige or dark grey.

Below are photos of the beige colored option.



FEATURES:

These Displays will allow you to display custom messages that you can pre-set and simply turn on or off. The messages can scroll across the display, blink or just stay solid while not in use during a sale. This is very handy and a great way to communicate specials with your customers.



If you are interested in getting additional information about the use, implementation and pricing for adding these displays to your POS terminals, please give us a call (707-257-8912) or e-mail esales@elypsis.com